

HOW TO USE

- DO NOT spray in hot weather.
- DO NOT apply 21 days before or after using an oil spray.
- DO NOT mix with an oil spray.
- DO NOT spray cucumbers, rockmelons, apricots, raspberries, and other sulphur sensitive plants.

Situation	Disease/Pest	Rate	How to Apply
CITRUS	Brown Citrus Rust Mite, Citrus Rust Mite, Citrus Bud Mite	Mix 40 – 50g per 10L of water	Spray July to August with thorough coverage. Do not use on citrus in hot weather or within 21 days of an oil spray. Use the higher rate for heavy infestation.
	White Louse Scale	Mix 20 – 30g per 10L of water	Apply at petal fall and during spring and autumn. Do not use on citrus in hot weather or within 21 days of an oil spray. Use the higher rate for heavy infestation.
GRAPES	Bud Mite, Bunch Mite, Grapeleaf Blister Mite (Erinose), Grapeleaf Rust Mite	Mix 20 – 35g per 10L of water	Use the lower rate for mid-season application. Apply after pruning and before bud burst. Apply at 2-4 weekly intervals depending on incidence of the pest. Use the higher rate for heavy incidence of infection.
	Powdery Mildew		Apply immediately after bud burst and then at 2-4 weekly intervals during humid weather. Use the higher rate early in the season before temperatures rise.
ORNAMENTALS	Powdery Mildew, Two Spotted Mite	Mix 20 – 35g per 10L of water	Apply when pest or disease is first seen and repeat as necessary.
POME FRUIT (e.g. Apples & Pears)	Black Spot (Scab), Powdery Mildew	Mix 20 – 35g per 10L of water	Apply at pink bud, petal fall and then at intervals of 2-3 weeks. Do not use in hot weather or on sulphur sensitive varieties. Also suppresses mite activity.
STONE FRUIT (except Apricots)	Brown Rot	Mix 20 – 35g per 10L of water	Apply about 4 weeks after petal fall and then as cover spray.
	Rust		Apply at petal fall only (QLD ONLY). Apply about 4 weeks after petal fall. Use the higher rate when conditions favour disease development.
VEGETABLES (except cucumbers & rockmelons)	Powdery Mildew, Rust, Twospotted Mite (Red Spider Mite), Tomato Russet Mite, Bean Spider Mite, Bean Rust	Mix 20 – 35g per 10L of water	Apply when disease or mite activity is noticed and then at 2 weekly intervals or as required. Use the higher rate in crops with a large leaf cover or when conditions favour disease or mite development.

**NOT TO BE USED FOR ANY PURPOSE OR IN ANY MANNER CONTRARY TO THIS LABEL UNLESS AUTHORISED.
DO NOT PICK GRAPES FOR 12 WEEKS AFTER SPRAYING.**

Batch No.:

Date of Manufacture:

Searles®

**WETTABLE
SULPHUR**

Fungicide/Miticide

HOW TO PREPARE:

Product can be applied through most garden sprayers. Add about half the required volume of water to the sprayer. Mix the required quantity thoroughly with water to form a cream before adding to the spray tank with agitation. Mix or agitate and then add the remaining water. Maintain agitation during spraying. Do not store mixed product. Only mix what you can use immediately. Thoroughly cover plants with spray ensuring all leaves are wetted. Avoid excessive runoff.

CAUTION:

DO NOT allow chemical containers or spray to get into drains, sewers, streams or ponds.

STORAGE AND DISPOSAL:

Store in the closed original container in a cool, dry place out of the reach of children. Do not store in direct sunlight. Dispose of empty container by wrapping in paper, placing in plastic bag and putting in garbage.

Searles®

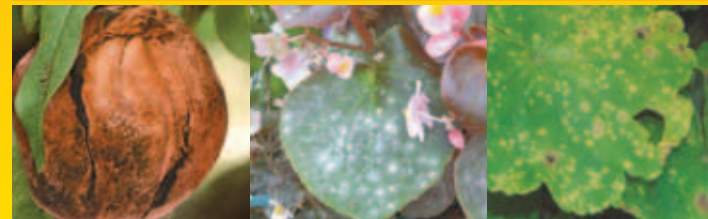
WETTABLE SULPHUR

Fungicide/Miticide

Searles®

**WETTABLE
SULPHUR**

Fungicide/Miticide



ACTIVE CONSTITUENT: 800g/Kg SULPHUR (S)

For the control of Brown Rot, Scab, Powdery Mildew and Rust on Pome & Stone Fruits; Mites & Powdery Mildew on Citrus, Vines, Vegetables, & Ornamentals in the home garden.

Net Contents: 250g

Searles®

**WETTABLE
SULPHUR**

Fungicide/Miticide

DISCLAIMER:

This product is designed to be used only for the purposes indicated on the label. Failure to use the product strictly as directed may be dangerous and cause injury, may be illegal, and may also render the product ineffective. The buyer or user is responsible for any misuses or negligence in the handling, storage, use of or disposal of this material. JC & AT Searle Pty Ltd will not accept any responsibility of any kind, whether for consequential loss or otherwise, in connection with the supply and use of the product other than those responsibilities mandatorily imposed by statutes applicable to the safety and supply of these goods.

J.C. & A.T. Searle Pty. Ltd.
4914 D'Aguiar Highway,
KILCOY, QLD. 4515
PH: (07) 5497 2022
FAX: (07) 5497 1997
www.searles.com.au

NRA Approval No. 55452/0602

BARCODE
9315138007625
mag factor 0.90